

Integration Guide for Integrati with Salto Sallis

The Integrati Security Management Platform includes a powerful bi-directional interface to the Salto Sallis wireless locking system. The Salto system connects into the Integrati hardware platform via a dedicated port on the Integrati-Sallis / Intelligent LAN Access Module. (Integrati-Sallis/ ILAM Module)

This interface provides the full capability of the Integrati access control system to both fixed wired doors & Salto Sallis wireless doors without compromise or limitation. With no need to wire directly down to the door when using Sallis wireless locks, installation costs are dramatically reduced. In addition, a huge range of door furniture options are available within the Sallis range to appeal to end-users and architects alike.

The Integrati system manages Sallis wireless doors in the same way as a traditional wired door, utilising the same intuitive interface when configuring user access permissions without the need of further special training or programming requirements.

Initial configuration of installed Sallis locks is programmed using the Sallis Setup Software which is not required for ongoing management of the locks. Conveniently, user access permissions and controls are managed through the Integrati Software Interface and all access control decisions are made at the hardware level for superior processing time and reliability.

Wireless access control with Real Time Monitoring



SALLIS
by SALTO

How it works

A cardholder presents their card at the Sallis lock. In a fraction of a second the lock will send the request to the Sallis Node and the Node will then relay the request via the Sallis Router through to the Integrati ISC controller. Based on the cardholders access permissions and any qualifiers (such as time of day), the Integrati ISC controller will immediately send a response back to the Sallis lock granting or denying access to the cardholder.

The entire process is virtually instantaneous to the card holder.

To ensure business continues as normal, Sallis locks have an in-built redundant cache of previously granted access users in the event it loses connection with the Integrati system. Upon re-connection, the Sallis lock will automatically synchronise any buffered events with the Integrati system.



Integrati
INTEGRATED SOLUTIONS

The system consists of four elements that interact with each other to deliver the architecture of the system.

Integrati
INTEGRATED SOLUTIONS

The Integrati access control system is where all the information related to access is hosted. (users, time periods, permission levels etc).

The Sallis Routers are the link between Integrati and the Salto platform and enable communication with the wireless system.

The Sallis Nodes are the wireless messengers between the Sallis Router and the wireless locks.

The Sallis wireless locking devices enable control of the doors without the need for wiring all the way to the door.



Connection Guide

Connection Parameters

- Up to 8 Sallis doors can be connected and managed from each Integrati-Sallis/ILAM Module (Part. INTG-996018PCB&K)
- 1 Sallis Router can be connected to each Integrati-Sallis/ILAM Module (Part. 660027)
- Up to 8 Sallis Nodes can be connected to each Sallis Router (Part. 660028)

Sallis Door Alarm and Event Monitoring

The following events are logged in the Integrati System as "Access events"

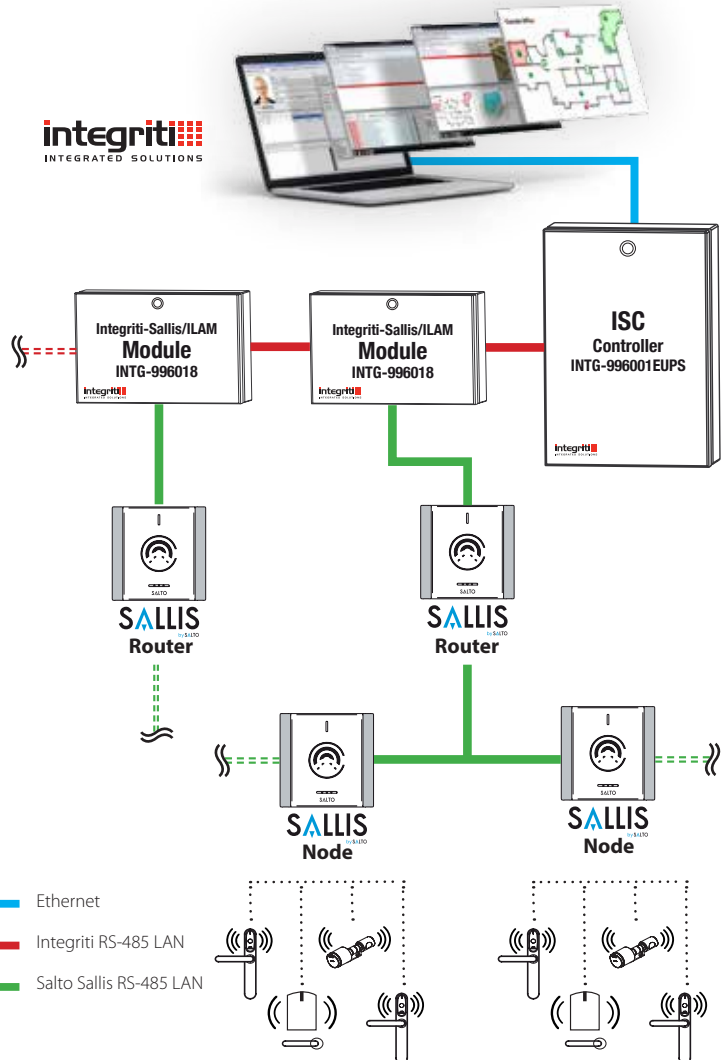
- Door open with card
- Door open with inside handle
- Card access denied
- Card access denied - lock has low batteries
- Card access denied - Node, Router or Host Offline

The following events are logged in the Integrati system as general events

- Start Office Mode / Free Access ordered by Integrati
- End of Office Mode / Free Access ordered by Integrati
- Start Office Mode / Free Access with card (A Salto function that will be overridden by Integrati)
- End Office Mode / Free Access with card (A Salto function that will be overridden by Integrati)
- Card out of time (A Salto data on card feature not used by Integrati)

The following events are logged by the Integrati system and can be monitored via Integrati's system inputs

- Low battery warning
- The communication with the lock has been lost
- The communication with lock has been re-established
- Door Left Open alarm
- End of Door Left Open alarm
- Intrusion alarm
- End of Intrusion alarm
- Tamper alarm
- End of Tamper alarm



Features

- All access permissions are assigned directly from the Integrati System
- Compatible with Mifare or HID PROX or HID iClass card formats**
- Time synchronisation between the two systems
- Receive Door Tamper Alarms from the Sallis system
- Receive Door Forced Alarms from the Sallis system
- Receive DOTL Alarms from the Sallis system (Door Open Too Long)
- Support for Sallis Office Mode (Doors in free access)
- The Sallis system provides off-line caching for access continuity should its connection to the Integrati system be compromised.

**The card format must be defined when specifying the Salto Sallis Door escutcheons and locks. HID iClass supports card serial number/unique ID only.



Integrati / Salto Sallis Components

Integrati Software

INTG-996901 Integrati Professional Software

INTG-996905 Integrati Express Software (Max of 16 Doors)

See the Integrati Software brochure for further options on Integrati Software

Integrati Controllers

INTG-996001EUPS Integrati ISC Controller in Metal Enclosure

See the Integrati ISC Controller Datasheet for specification details and further options

Integrati Salto Sallis Interface / ILAM Module & Enclosure

INTG-996018PCB&K Integrati-Sallis/ILAM Module

INTG-995200PEEUI Small Enclosure to suit above (With 2Amp SMART PSU 252x358x85mm)

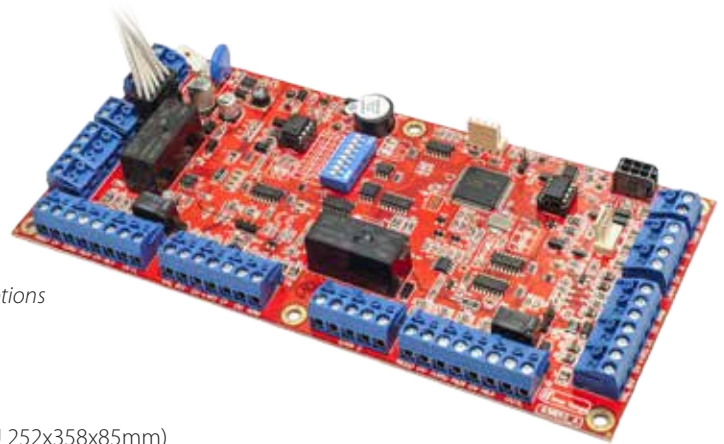
Licensing Considerations

INTG-996024 SALTO Door license for Integrati SMART Card (Per Sallis Door)*

Consideration should also be given to the total number of doors being managed by each Integrati Controller and the Integrati Software.

Appropriate Controller SMART card Level dimensions and Software Door Licenses can be ordered accordingly.

Please see the Integrati SMART card and Software guides for further details



Salto Sallis Routers & Nodes

660027 - SALLISROUT485 - Sallis Router RS485

660028 - SALLISNODE - Sallis RF Node

Salto Installation & Commissioning Tools

660029 - PPD800 - Sallis Portable Prog Device

660032 - SALLISCNF - SALLIS Software

A wide range of Salto Sallis door escutcheons and hardware is available from Inner Range Europe Limited.

Euro Door Escutcheons

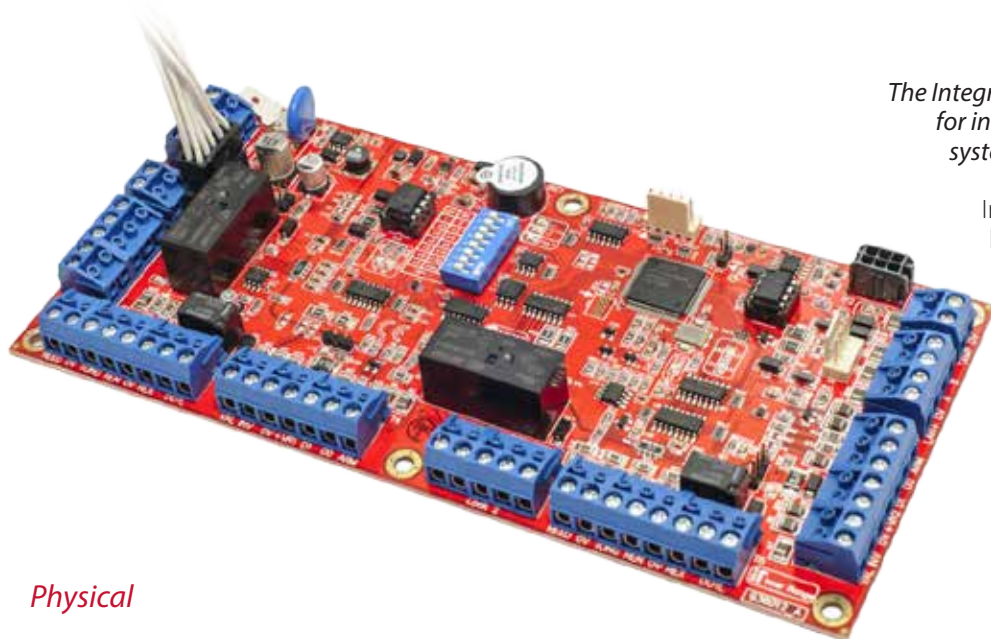
ANSI Wide Body Door Escutcheons

GEO Cylinders & Padlocks



Please consult the full Salto Sallis Catalogue for further details and ordering options.

The Integrati Salto Sallis Interface / ILAM Module (996018)



The Integrati Sallis/ILAM Module can be configured for integration with Salto Sallis wireless door systems.

In this mode up to 8 Salto Sallis doors can be connected to the module via a single RS-485 sub connection to a Salto Sallis Router.

Each of the 8 Doors available on the Integrati Sallis/ILAM module can be configured independently allowing for a mixture of both standard wired doors, and wireless Salto Sallis.

Physical

PCB Dimensions:	200(L) x 94(W) x 45(D) (mm)
PCB Size Code:	Integrati "B" size
Recommended Enclosure for Integration with Salto Sallis:	Small - INTG-995200PEEU Series - 252(L) x 358(W) x 85(D) (mm) (with 2Amp PSU)

NOTE: Medium, Xlarge, Widebody and Rack Mount enclosures are also available and may be selected where the Integrati Sallis/ILAM module is to be installed alongside other equipment in the same enclosure.

Weight:	300g. (For PCB & accessories Only)
Installation Environment:	0°C - 40°C @15% - 85% Relative humidity (non-condensing)

Electrical (For PCB Only)	
Power Supply Input:	11V to 14VDC
Current Consumption:	110mA standby. (Not Including any Current Required by the Sallis Router)

NOTE: For the purposes of this guide the current consumption stated assumes that the product will be configured with all 8 doors/Readers operating in Salto Sallis mode. Where a mixture of Salto Sallis doors and Integrati Intelligent wired doors/readers are configured on the same module current consumption of the peripheral devices will also need to be considered. Please consult the separate Integrati Intelligent LAN Access Module Datasheet for further details.

Connections

RS-485 LAN:	For connection to the Integrati System LAN
RS-485 Reader:	For connection to the Salto Sallis Router
Cabinet Tamper:	2 pin connection for cabinet tamper switch
External Power:	For connection of Integrati Smart Power supply (SMART PSU)

External Power Supply Monitoring (Compatible with IR SMART PSU Devices)

AC Fail:	External PS AC Fail
Low Battery:	External PS Low Battery
LAN Fuse:	External PS LAN Fuse
Detector Fuse:	External PS Detector Fuse
Low Volts:	External PS Low Volts
PSU Fail:	External PS Fail

Salto Sallis Routers & Nodes



Router RS485 features

The SALTO Routers are the link between the Integriti Salto Sallis Interface/ILAM Module and the rest of the Salto Sallis platform and enable communication with the wireless system.

- Connection to the HOST through RS-485 bus.
- Voltage required 12V (adapter included).
- Relationship of one router to (up to) 8 nodes and 8 locks in the Integriti system.

Node features

The SALTO Nodes are the wireless messengers between the SALTO Router and the Wireless locks.

- Wireless radio frequency based on IEEE 802.15.4 at 2,4Ghz.
- AES 128 bit encryption.
- Connection to the Salto Router through the Salto RS485 bus.
- Can manage up to 8 locks in the Integriti Salto System.
- Firmware update through PPD.

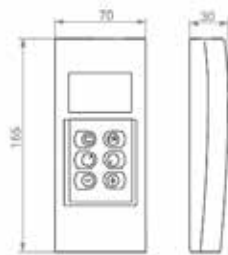


Salto Configuration Products

To perform routine tasks such as configuring the access control hardware, running diagnostics on off-line devices or perform emergency openings in extreme situations etc. Salto has developed a useful range of tools to make such tasks easier and faster.

SALTO Portable Programming Device PPD

The Salto Portable Programmer Device is used for the configuration of the Salto locks. The Salto PPD has a multilingual interface.



Main functions

- Initialise doors
- Collect audit trail
- Update locks (door profile & internal clock)
- Door diagnostic
- Emergency opening
- Firmware update

Technical data

- Power supplied: 3 Alkaline batteries - LR03 - AAA 1.5V.
- Connection to lock: Cable included
- PC connection: USB

SALTO Sallis Setup Software

The Sallis setup software is necessary for initial configuration and for applying firmware updates to the Salto Routers, Nodes and the PPD device. Once these Salto components are configured the Sallis setup software is removed and will only be required further if configuration changes or firmware updates need to be applied.

The Integriti software is used for day to day administration of access permissions, card allocation, door monitoring and door free access times.



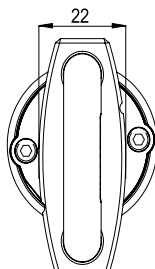
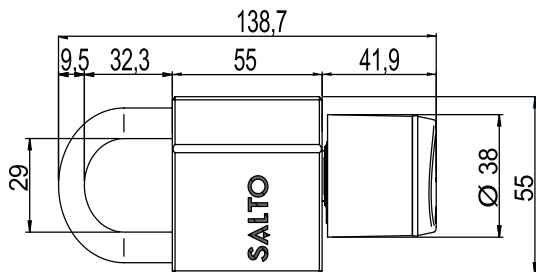
SALTO GEO

Padlock

The SALTO GEO Padlock is a versatile locking solution that enables users to benefit from the advantages of electronic access control where previously it was only possible to use a mechanical locking solution.



- Padlock body made of brass with stainless steel finish.
- Padlock shackle made of stainless steel.
- Optical signalling through light ring. Dual colour green/red to indicate access authorisation. Acoustic signal optional.
- Available in 4 different finishes: Satin chrome, Polished chrome, PVD polished brass, PVD satin brass.
- High security via high resistance, hardened anti-drill protection.
- Concealed fixing screws for greater security and improved aesthetics
- Emergency opening by means of portable programming device (PPD).
- IP 66 protection rating or higher depending on the model.



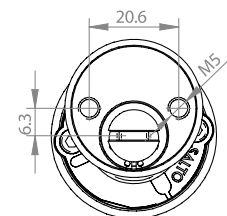
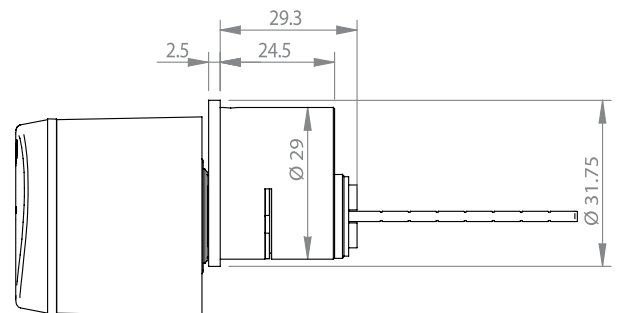
SALTO GEO

UK RIM cylinder

Specially designed to fit most doors that are equipped with surface mounted cases, panic bars and top guards that need this kind of locking system.



- Optical signalling through light ring. Dual colour green/red to indicate access authorisation. Acoustic signal optional.
- Available in 4 different finishes: Satin chrome, Polished chrome, PVD polished brass, PVD satin brass.
- High security via high resistance, hardened anti-drill protection.
- Concealed fixing screws for greater security and improved aesthetics
- Emergency opening by means of portable programming device (PPD).
- IP 66 protection rating or higher depending on the model.

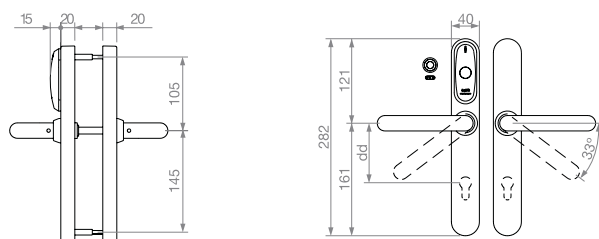


The SALTO GEO padlock is designed for use in non-harsh environments only.

Euro Door Escutcheons

The narrow body version is specially designed to fit most Euro profile doors, even narrow profile framed doors and work with the majority of European mortise locks and cylinders.

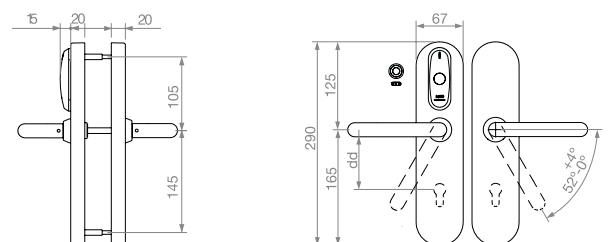
- Clutch mechanism escutcheon when unlocked handle moves free.
- ID technologies available: i-Button, DESfire, DESfire EV1, Mifare, Mifare plus, Mifare Ultralight C, Inside Picopass, Legic, HID iClass, SKIDATA.
- Available in wireless sallis version for wireless real-time control.
- Door status detector to monitor intrusions or door left open status (wireless escutcheons only).
- Body and escutcheon made of steel.
- Dimensions: 282mm x 40mm x 20mm.
- Handle rotation: 33°.
- Door thickness compatibility: 30mm to 115mm.
- Distance from the handle to the cylinder: 47mm to 110mm.
- Compatible with DIN mortise locks, European mortise locks and narrow style mortise lock.
- Compatible with European profile cylinders and Swiss profile cylinders.
- Square spindles available: 7mm, 7.6mm split, 8mm, 8mm split, 9mm and 9mm split.
- Mechanical override with audit trail facility available.
- Electronic privacy function through thumb turn or button on the inside.
- AMOK version available for off-line lockdowns.
- IP55 compliant (external escutcheon).
- EN1634-2 EI 120 Fire Resistant.
- UL 10C Compliant (90min wooden doors).



ANSI Wide Body Door Escutcheons

The wide version is specially designed to fit most Euro profile doors, and work with the majority of European mortise locks and cylinders. It is specially designed for use on busy, high traffic doors that need additional strength.

- Clutch mechanism escutcheon when unlocked handle moves free.
- ID technologies available: i-Button, DESfire, DESfire EV1, Mifare, Mifare plus, Mifare Ultralight C, Inside Picopass, Legic, HID iClass, SKIDATA.
- Available in wireless sallis version for wireless real-time control.
- Door status detector to monitor intrusions or door left open status (wireless escutcheons only).
- Body and escutcheon made of steel.
- Dimensions: 290mm x 67mm x 20mm.
- Handle rotation: 52°.
- Door thickness compatibility: 30mm to 115mm.
- Distance from the handle to the cylinder: 47mm to 110mm.
- Compatible with DIN mortise locks, European mortise locks and narrow style mortise lock.
- Compatible with European profile cylinders, Swiss profile cylinders and some tubular latches.
- Square spindles available: 7mm, 7.6mm split, 8mm, 8mm split, 9mm and 9mm split.
- Mechanical override with audit trail facility available.
- Electronic privacy function through thumb turn or button on the inside.
- AMOK version available for off-line lockdowns.
- IP55 compliant (external escutcheon).



Integrati - Salto Sallis **INTEGRATION GUIDE**

Integrati and Salto Sallis hardware and software are available for purchase from Inner Range Europe.

For more information on Integrati and Salto Sallis integration please contact:



www.innerrange.com

Inner Range Europe Limited

Units 10-11
Theale Lakes Business Park
Moulden Way, Sulhampstead
Reading, Berkshire RG74GB
UNITED KINGDOM
Tel. +44 (0) 845 470 5000
Fax. +44 (0) 845 470 5001
E. ireurope@innerrange.co.uk

The specifications and descriptions of the products and services contained in this guide were correct at the time of publishing. Inner Range and Salto reserve the right to change specifications or withdraw products without notice.